

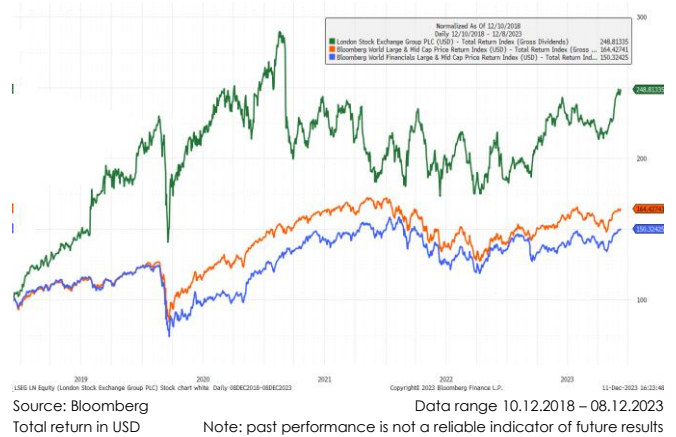
## TRANSACTION RATIONALES

### Purchases / Increases

#### London Stock Exchange Group (LSEG)

After the acquisition of Refinitiv, LSEG has transformed itself in the last three years into an integrated data service/analytcs platform for the financial industry. That along with its strong position in trading and settlement makes it the backbone of many financial institutions and a strategic partner. In addition, LSEG has made significant advances in the digitalization of its products and their integration into one workbench. Its recent deal with Microsoft is transformational in this field. As the costs and disruptions of the Refinitiv-acquisition now largely lies behind the company organic sales and particularly cash flow growth should accelerate. The recently enlarged share buyback program is testament to this. After an extended period of underperforming the market and its peers, LSEG offers an excellent long-term investment opportunity.

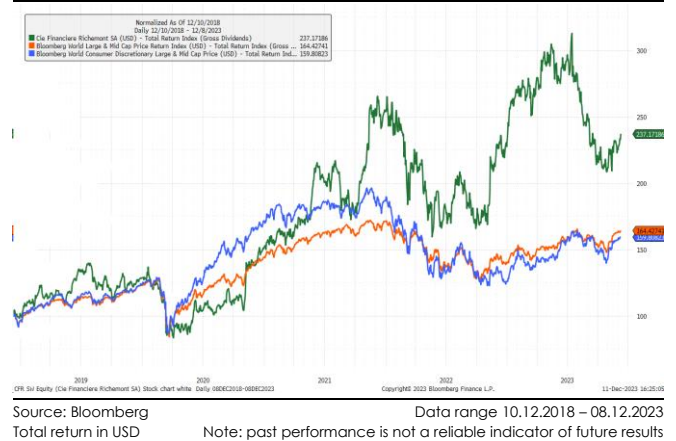
#### 5-year chart: London Stock Exchange vs. the Bloomberg World Index and the Sector



#### Richemont

Richemont is the leading hard luxury franchise gathering a collection of more than 20 Maisons including Cartier and Van Cleef. Thanks to a consistent growth of its Jewelry business, successful acquisition in the space (Buccellati) and a restructuring of its watch business, Richemont is now much more centered around its more economically attractive Jewelry maisons which generates 2/3 of sales (50% 10 years ago) and 85% of its earnings. After a few failed attempts to scale its own luxury e-commerce that has consumed large amount of capital, management has capitulated and now seems to direct fully its attention and resource on the development of its top-notch brands to seize the opportunities that the high-end luxury categories offer. We view Jewelry as better positioned to weather the clouds that are gathering above the luxury goods skies (i.e. structural slowdown of the Chinese economy, upending of the rise in inequality trends ...). The increasing penetration of branded jewelry will continue to be a growth driver for many years and after aggressive price hikes by luxury leather goods companies the relative value of Jewelry over other luxury goods is now much higher than it has historically been. Fears of cyclical downturn and questions over how fast the industry can grow structurally has pressured the stock price of Richemont to a level that undervalues the quality of that business, its ability to compound structurally and the improved capital allocation.

#### 5-year chart: Richemont vs. the Bloomberg World Index and the Sector

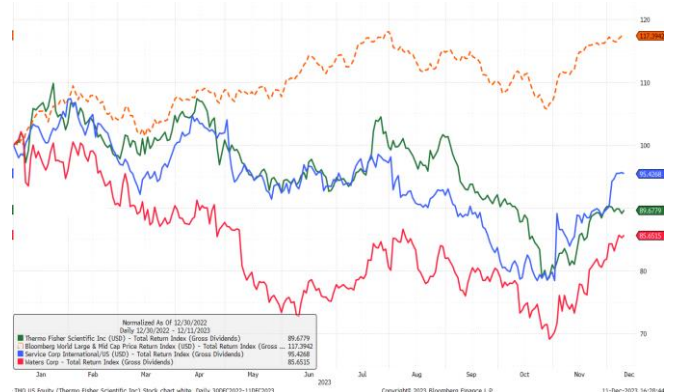


## Increases in existing positions of Thermo Fisher and ServiceCorp

We are increasing existing positions in high-quality names that offer compelling long-term value for money and that have lagged the market in 2023.

Therefore, we are adding to Thermo Fisher and ServiceCorp. While all those stocks were out of favor, their fundamentals remain strong, and all those names offer large relative upsides.

## YTD-chart: Thermo Fisher, ServiceCorp & Waters vs. the Bloomberg World Index



Source: Bloomberg  
 Total return in USD  
 Data range 30.12.2022 – 08.12.2023  
 Note: past performance is not a reliable indicator of future results

**Sells / Reductions**

**ServiceNow: Reducing our large positions in the style neutral strategy after the steep gains in 2023**

We cut back ServiceNow by half in the Focused Equity Strategy as a general risk management measure after the stock's 80%-gain in 2023 lifted valuation to close to fair value and the holding had grown into the 2<sup>nd</sup> largest position in the strategy.

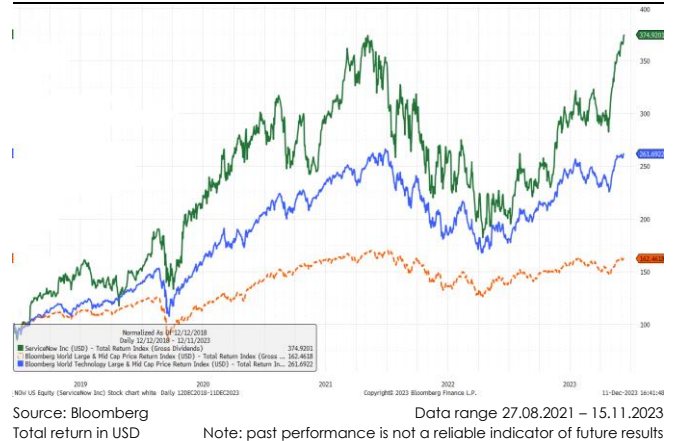
However, Service is long-term a prime beneficiary of the ongoing drive for AI, the move to the cloud and the automation of workflows across corporations. As it acts as the control tower of the corporate network and its data flows, ServiceNow's capabilities in network integration will be sought after even more by the increasing search of corporates for efficiency and cost optimizations.

Given the strong long-term growth outlook we keep half the position in the Focused Equity Strategy. As the Growth Equity Strategy has a longer investment time horizon and a focus on growth, we maintain the full position in ServiceNow because of its long runway for double digit growth.

With kind regards,

**Emerald Wealth Partners AG**, Investment Office

**5-year chart: ServiceNow vs. the Bloomberg World Index and the Sector**



## DISCLAIMER / IMPORTANT INFORMATION

This document has been prepared and distributed by Emerald Wealth Partners AG based on various reliable research information. Although it may contain contributions of research analysts or quote research reports, it is not investment research or a research recommendation for regulatory purposes as it does not constitute substantive research or analysis. Some of the articles quoted in this document may have been published on Bloomberg by various trustful research providers and may be found on the research providers' website, including the necessary disclaimers and disclosure statements.

It is directed to a professional audience including prospects and not intended for distribution to, or use by, any person or entity that is citizen or resident of, or located in any jurisdiction where such distribution, publication, availability or use would be unauthorized or otherwise contrary to applicable law or regulations. Information, tools and material presented in this document are provided for information purposes only and are not to be used or considered as an offer or solicitation to buy, sell or subscribe any securities or other financial instruments. Any information including facts, opinions or quotations, may be condensed or summarized and is expressed as of the date of writing.

The information contained in this document has been provided as a general market commentary only and does not constitute any form of regulated financial advice, legal, tax or other regulated service. It does not take into account the financial objectives, situation or needs of any persons, which are necessary considerations before making any investment decision. Emerald Wealth Partners does not advise on the tax consequences of investments and you are advised to contact a tax advisor should you have any questions in this regard. The information provided is not intended to provide a sufficient basis on which to make an investment decision and is not a personal recommendation or investment advice. It is intended only to provide observations and views of Emerald Wealth Partners AG at the date of writing, regardless of the date on which the reader may receive or access the information. Observations and views contained in this document may change at any time without notice and with no obligation to update. The information may change without notice and Emerald Wealth Partners AG is under no obligation to ensure that such updates are brought to your attention. Accordingly, Emerald Wealth Partners AG accepts no liability for any loss arising from the use of this document.

Emerald Wealth Partners AG partners, affiliates and/or their employees may have a position or holding, or other material interest or effect transactions in any securities mentioned or options thereon, or other investments related thereto and from time to time may add to or dispose of such investments.

To the extent that this document contains statements about future performance, such statements are forward looking and subject to a number of risks and uncertainties. Information and opinions presented in this document have been obtained or derived from sources which in the opinion of Emerald Wealth Partners AG are reliable, but Emerald Wealth Partners AG makes no representation as to their accuracy or completeness. Emerald Wealth Partners AG accepts no liability for a loss arising from the use of this document.

Unless indicated to the contrary, all figures are unaudited. All valuations mentioned herein are subject to Emerald Wealth Partners AG valuation policies and procedures. It should be noted that historical returns and financial market scenarios are no guarantee of future performance. The price and value of investments mentioned and any income that might accrue could fall or rise or fluctuate. Past performance is not a guide to future performance. If an investment is denominated in a currency other than your base currency, changes in the rate of exchange may have an adverse effect on value, price or income.

Investments may have no public market or only a restricted secondary market. Where a secondary market exists, it is not possible to predict the price at which investments will trade in the market or whether such market will be liquid or illiquid. The retention of value of a bond is dependent on the creditworthiness of the Issuer and/or Guarantor (as applicable), which may change over the term of the bond. In the event of default by the Issuer and/or Guarantor of the bond, the bond or any income derived from it is not guaranteed and you may get back none of, or less than, what was originally invested. Parties other than the Issuer or Guarantor (as appropriate) (for instance the Lead Manager, Calculation Agent or Paying Agent) do neither guarantee repayment of the invested capital nor financial return on the investment product, if nothing is indicated to the contrary.

The distribution of this document and the offer and sale of the investment in certain jurisdictions may be forbidden or restricted by law or regulation. This document is not directed to, or intended for distribution to or use by any person or entity who is a citizen or resident of, or is located in, any jurisdiction where such distribution, publication, availability or use would be contrary to applicable law or regulation. This document has been furnished to the recipient and should not be re-distributed without the express written consent of Emerald Wealth Partners AG. For further information, please refer to your contact person at Emerald Wealth Partners AG.

This material may not be published or reproduced, in all or in part, without the prior written express consent of Emerald Wealth Partners AG. Copyright © 2023 Emerald Wealth Partners AG. All rights reserved.